

# PARK ORIGIN

CHULA - SAMYAN



**“WHERE THE RIVER BENDS,  
ELEGANCE BEGINS.”**

*AT THIS CURVE OF CHAO PHRAYA, LIFE UNFOLDS WITH TIME, SPACE, AND SOUL.*

## PROJECT INFO

PROJECT NAME	: PARK ORIGIN CHULA-SAMYAN
LOCATION	: RAMA IV RD, MAHA PHRUETTHARAM, BANG RAK, BANGKOK 10500
TOTAL AREA	: 2-0-94.2 RAI
PROJECT TYPE	: HIGH-RISE CONDOMINIUM 1 BUILDING
TOTAL UNITS	: 499 UNITS
PARKING SPACES	: 64% AUTO PARKING



## FACILITIES

1ST FLOOR	: THE GRAND LOBBY , SMART MAILBOX , CAR WAITING LOUNGE
2ND FLOOR	: CO-CREATIVE SPACE , BUSINESS LOUNGE, EXCLUSIVE MEETING ROOM
3RD - 15TH FLOOR	: AUTO PARKING
45TH FLOOR	: HIDEAWAY LOUNGE , WINE CLUB , FINE PRIVATE DINNING , SKY PIER GARDEN
45TH FLOOR (M1)	: SKY WORKOUT
45TH FLOOR (M2)	: THE HAVEN ONSEN , STREAM ROOM
46TH FLOOR	: SWIMMING ON CLOUD , ROOF TOP , HOT SPRING THERAPY SUNBED



PARK ORIGIN  
CHULA - SAMYAN

# MASTER PLAN



2<sup>nd</sup> FLOOR PLAN

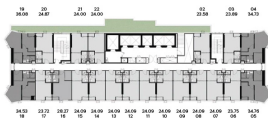


45<sup>th</sup> FLOOR PLAN

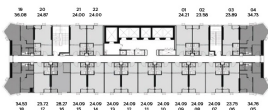


46<sup>th</sup> FLOOR PLAN  
SHOWING IN CLUD

# FLOOR PLAN



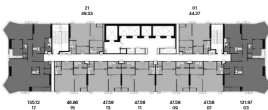
16<sup>TH</sup> FLOOR PLAN



17<sup>TH</sup> - 32<sup>TH</sup> FLOOR PLAN



33<sup>TH</sup> - 41<sup>TH</sup> FLOOR PLAN



42<sup>TH</sup> - 44<sup>TH</sup> FLOOR PLAN



## ROOM LAYOUT



1 BEDROOM CORNER 35 SQ.M.



1 BEDROOM PLUS 47 SQ.M.

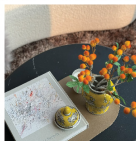
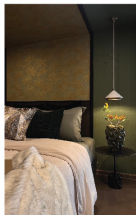


1 BEDROOM PLUS CORNER 60 SQ.M.

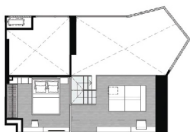


1 BEDROOM PLUS EXCLUSIVE 47 SQ.M.

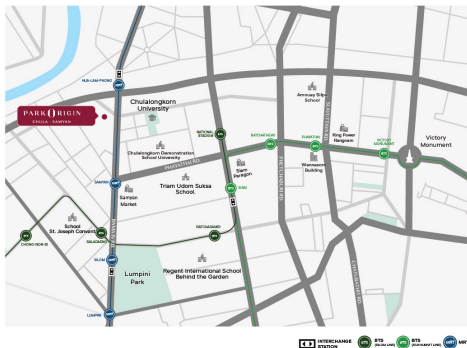




1 BEDROOM PLUS CORNER 60 SQ.M.



## BEST LOCATION



### DEPARTMENT STORE

- 0.5 KM. SAMYANG MARKET
- 1.0 KM. CHAMCHURI SQUARE
- 1.5 KM. TM PARK CHULA
- 2.3 KM. ROBINSON BANGRAK
- 2.4 KM. SIAM CENTER
- 2.4 KM. SIAM DISCOVERY
- 2.4 KM. MBK CENTER
- 2.5 KM. SILOM COMPLEX
- 2.6 KM. SIAM PARAGON
- 3.1 KM. CENTRAL WORLD
- 3.8 KM. CENTRAL CHIDLOM

### EDUCATIONAL HUB

- 0.3 KM. CHULALONGKORN UNIVERSITY
- 1.4 KM. CHULALONGKORN DEMONSTRATION SECONDARY UNIVERSITY
- 1.6 KM. TRIAM UDOM SUKSA SCHOOL
- 1.9 KM. ASSUMPTION COLLEGE
- 2.3 KM. BANGKOK CHRISTIAN COLLEGE
- 2.6 KM. SAINT JOSEPH CONVENT SCHOOL
- 3.3 KM. REGENT'S INTERNATIONAL SCHOOL LANGSUAN CAMPUS
- 3.9 KM. CRESCENT INTERNATIONAL SCHOOL

### MEDICAL HUB

- 1.7 KM. THE BANGKOK CHRISTIAN HOSPITAL
- 1.7 KM. SAMITVEJ CHINATOWN HOSPITAL
- 1.8 KM. KING CHULALONGKORN MEMORIAL HOSPITAL
- 2.6 KM. POLICE GENERAL HOSPITAL
- 2.7 KM. BNH HOSPITAL
- 3.0 KM. HUA CHIEW HOSPITAL
- 3.0 KM. SAINT LOUIS HOSPITAL
- 3.3 KM. THONBURI BAMRUNGMUANG HOSPITAL
- 4.3 KM. MEDPARK HOSPITAL

### BUSINESS DISTRICT

- 1.0 KM. MITRTOWN OFFICE TOWER
- 1.1 KM. CHAMCHURI SQUARE
- 2.2 KM. SILOM COMPLEX
- 3.7 KM. EMPIRE TOWER
- 4.5 KM. THE PARQ
- 4.6 KM. FYI CENTER



FINE PRIVATE DINNING



CAR WAITING LOUNGE



THE GRAND LOBBY



SWIMMING ON CLOUD

Park Origin Chula - Samyong Condominiums Project by Park Origin Phram 4 Company Limited, having registered office located at 496 Moo 9, Samrong Naea, Mueang Samut Prakan, Samut Prakan, 10270. Mr. Siripong Srisawangwong is an authorized director, having the total registered capital of 900,000,000 Baht (Nine Hundred Million Baht) (Fully paid). The project is located on Rama 4 Road, Maha Phruetharam, Bang Rak, Bangkok. The land title deed no. 1833, 1886 and 2424 with the total land area of 2-0-942 Rai. The Project is comprising of 46-storey high building with totaling of 499 residential units and 2 commercial units (shop). Building Construction Permit No. 207/2562 dated 18 December 2019. Project completed. Condominium Registration No. 2/2566. The Project is mortgaged with UOB Bank P.L.C. The Purchaser is responsible for the sinking fund and maintenance expenses as stated in the rules and regulations of Juristic Person guidelines and taxes will be paid by unit owners under the condominium law. Terms and conditions apply. \*Images for advertising purposes only.

FOR INFORMATION



LINE OFFICIAL



WEBSITE